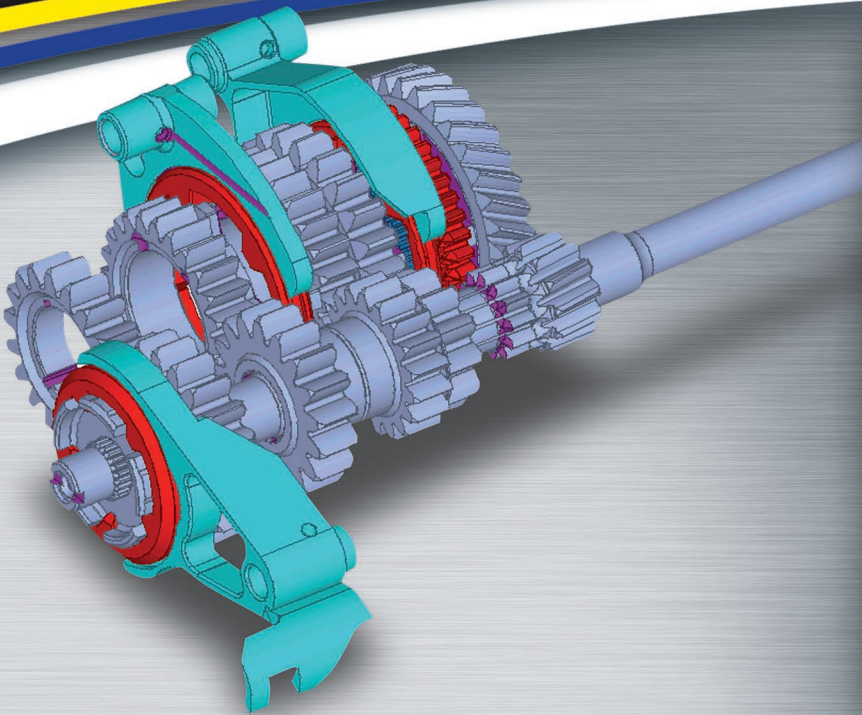




DOG BOX KIT 5 speed

Subaru Impreza WRX to 2003



KIT INCLUDES

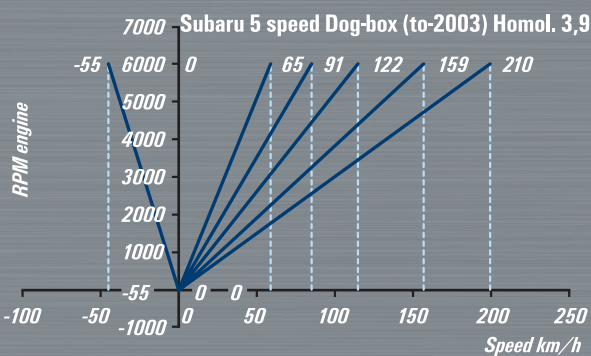
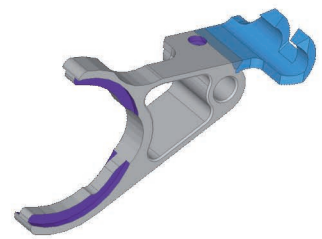
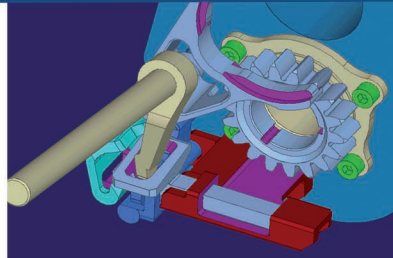
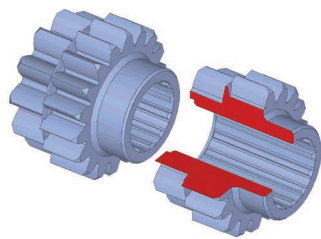
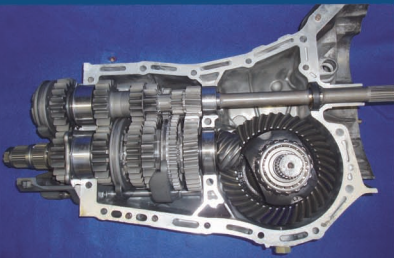
- INPUT shaft
- Modified OEM OUTPUT shaft
- SELECTOR rods + forks (high tech technology)
- 1st - 5th GEARS with dog-rings
- INTERLOCKING system

The installation needs to be undertaken in the KAPS Transmissions workshop due to an extensive variety of Subaru stock gearboxes. After the installation, the gearbox is ready to be mounted into the car without any further modifications.

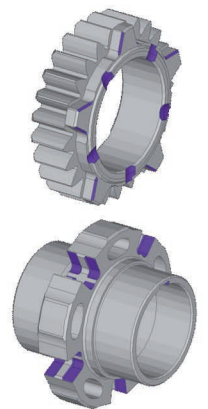
All parts are Shot Peened and superior finished with CH-M technology

FIA homologated for Group N or alternative gear ratios available

Racing hard syncro version available



GEAR	Tooth count		GEAR ratio
	output	input	
1st	35T	12T	2,91
2nd	23T	11T	2,09
3rd	28T	18T	1,55
4th	25T	21T	1,19
5th	18T	20T	0,90



SHIFT AHEAD OF THE PACK. SHIFT FAST